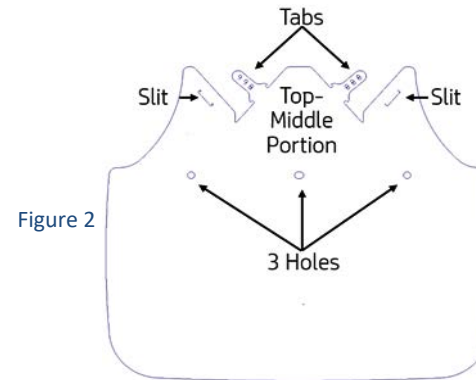
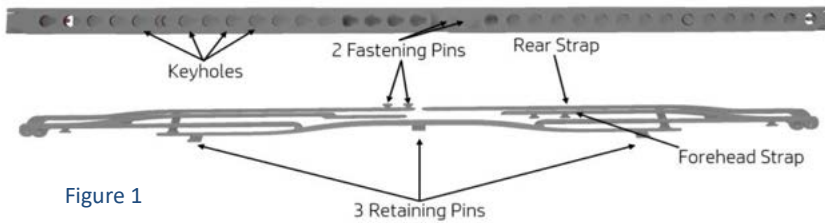


CROWNED FACE SHIELD ASSEMBLY

Materials Needed:

- 1x Shield Frame (Figure 1)
- 1x Clear Plastic Shield (Figure 2)



Assembly Instructions:

1. Connect shield by aligning the 3 holes on the shield with the 3 retaining pins on the flattened frame (Figure 3).
 - *It is easiest to start with either the left or right retaining pin and work your way to the other side.*
 - *To ease alignment of the last hole over the last retaining pin, the frame can be bent slightly.*
 - *Embossed lettering should be legible.*
2. After fastening the plastic shield to the retaining pins, bend the front of the frame to connect the forehead strap while maintaining the connection between the shield and frame (Figure 4).
3. Pull the forehead straps on the frame and slot the two fastening pins into two keyholes (Figure 5).
4. Stretch one of the tabs on the clear plastic shield over the top middle portion and insert it into the slit (Figure 6).
5. Pull the inserted tab from underneath the clear plastic shield until it is fully seated and stays in place (Figure 7).
6. Repeat Step 4 and Step 5 for the second tab and slit on the other side.
7. Fit the face shield to forehead and secure the rear strap behind the head using the keyholes and fastening pins.
8. Readjust to ensure a comfortable fit.



Figure 3



Figure 4



Figure 5

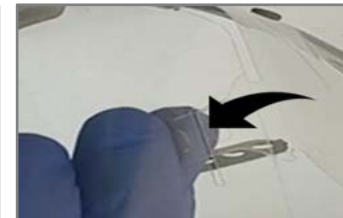


Figure 6

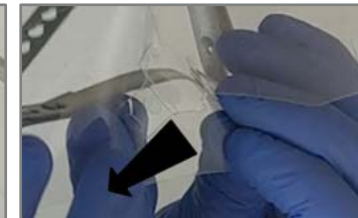


Figure 7

View a video on face shield assembly at <https://avidpd.com/knowledge-base/3d-printing-ppe-in-support-of-covid-19-containment-efforts/>